

NEW! Graphics Editor For GAUSS 5.0

GAUSSTM

Now Available!

- **Dynamic Graphics Page Creation**
- **Interactive Drawing and Text for Annotating Your Graphs**
- **Create Multiple Graph Windows**
- **JPEG and Other Graphics Support for Web Page and Publishing Applications**

 The NEW Graphics Editor for GAUSS is an add-on option for composing graphics documents interactively. Create professional presentations and publications from within GAUSS.

- **Dynamic Graphics Page Creation**

Allows you to build your page interactively.

- **Interactive Drawing and Text for Annotating Your Graphs**

Draw objects such as rectangles, arrows, lines and text.

Provides Zoom capability for detailed work.

- **JPEG and Other Graphics Support for Web Page and Publishing Applications**

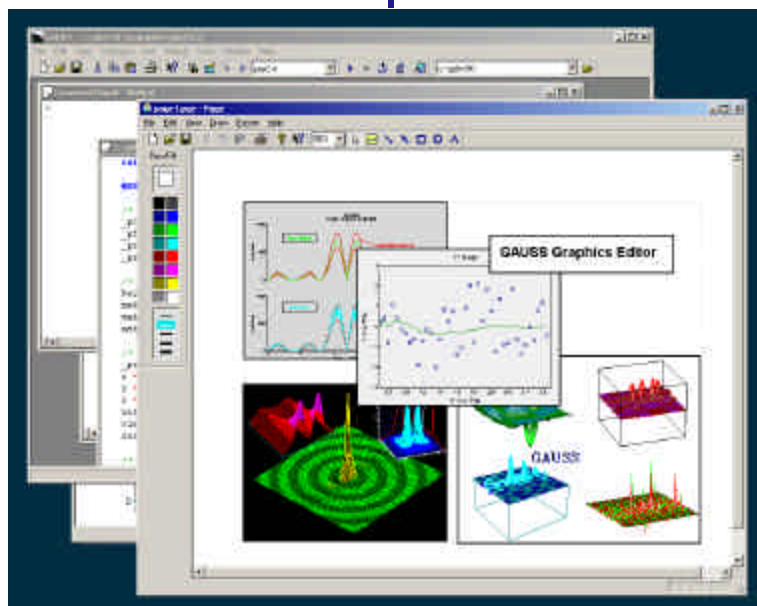
Supports the following file formats:

- jpeg
- tiff
- Windows Enhanced Metafile
- Encapsulated Postscript

- **Create Multiple Graph Windows**

Add multiple GAUSS graphs to a page interactively.

Customizable graph windows



Requirements:

Requires GAUSS Mathematical & Statistical System (GAUSS) 5.0 or the GAUSS Engine/GAUSS Engine Pro/GAUSS Engine for Workgroups/GAUSS Enterprise Engine 5.0.

Platforms:

Available for Windows

Aptech Systems Inc.

Phone: (425) 432-7855 ♦ FAX: (425) 432-7832 ♦ info@Aptech.com

URL: www.Aptech.com