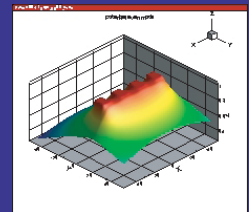
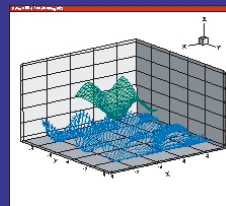
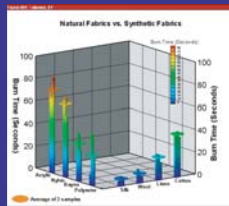
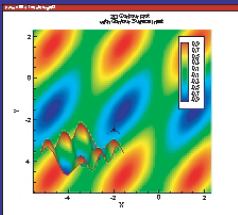
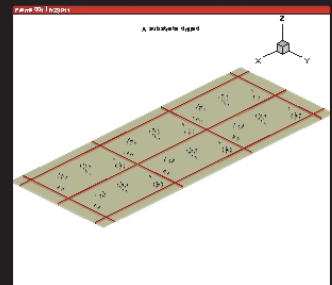
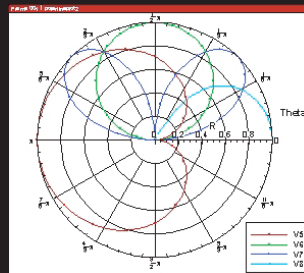
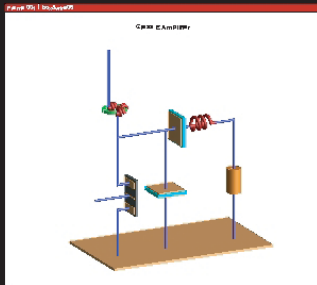
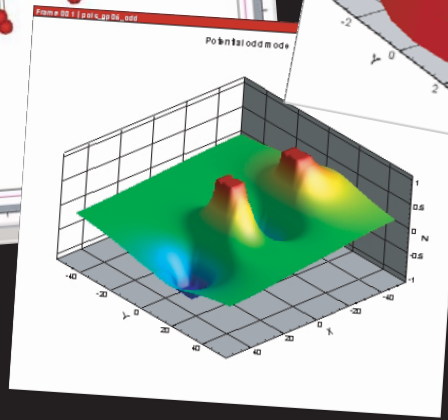
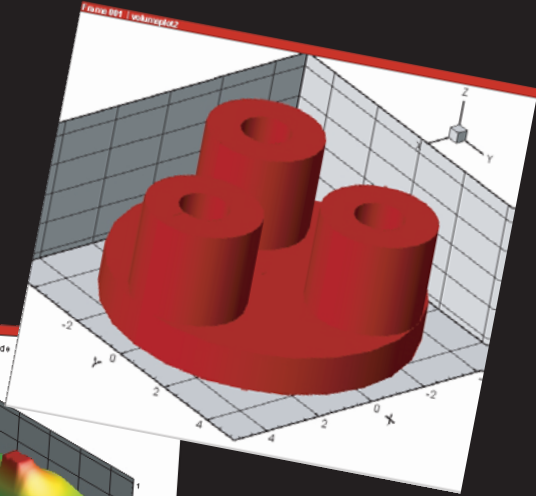
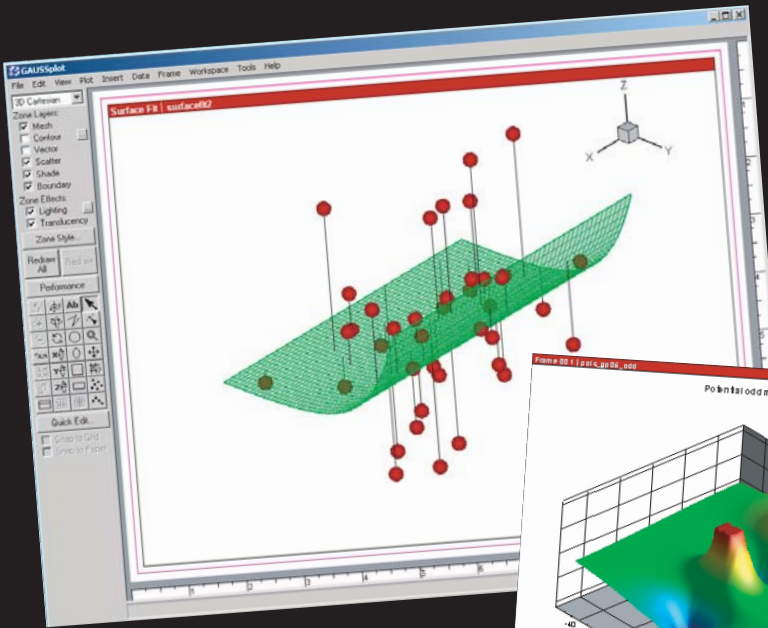


# GAUSSplot™

Powered by *Tecplot*

Professional Graphics for the GAUSS  
Mathematical & Statistical System™



Aptech Systems, Inc.  
[www.Aptech.com](http://www.Aptech.com)

# ● Analyze ● Visualize ● Customize

Now available:

## GAUSSplot™ Professional Graphics 8.0 for the GAUSS Mathematical and Statistical System™!

### New in GAUSSplot™ 8.0:

- **New graphs**
  - Histograms
  - Frequency histograms
  - Percentage histograms
  - Box graphs using the percentile method
- **XY Line graphs** have been expanded:
  - Graphs with Log scaling for the X axis
  - Graphs with Log scaling for the Y axis
  - Graphs with Log scaling for the X and Y axes
- **Nearly 50 new functions** added

---

GAUSSplot features a fully functional GUI that allows you to make changes to your graph at the click of a button!

- **Plot types supported by GAUSSplot**
  - Histograms
  - XY Line plots
  - Bar plots
  - Polar Line plots
  - 2D Cartesian plots
  - 2D Contour plots
  - 3D Cartesian plots, including
    - 3D surfaces and solids
    - Gouraud shading
    - configurable light source intensity and location
    - surface translucency
  - 3D Contour plots
- **Built-in curve fitting**
- **3D rotation and animation**
- **Supports the following export file types**
  - Encapsulated PostScript (EPS)
  - PostScript
  - HPGL and HPGL/2
  - Windows Metafile Format (WMF)
  - JPEG
  - BMP
  - PNG
  - TIFF
  - PostScript bitmap
  - Sun Raster bitmap
  - X-Window bitmap
- **Available platforms**
  - 32-bit: Windows, Mac OS X, Linux
  - 64-bit: Windows Itanium 2, Linux AMD64, Solaris

**Requires GAUSS 7.0+**

Enhanced with Visualization Software from TECPLOT, INC.  
**Tecplot** is a registered trademark of  
Tecplot, Inc., Bellevue, Washington, USA.

---

## Aptech Systems, Inc.

P.O. Box 250 ♦ Black Diamond, WA 98010 ♦ USA

Phone: (425) 432-7855 ♦ FAX: (425) 432-7832 ♦ email: [info@Aptech.com](mailto:info@Aptech.com)