

Graphs

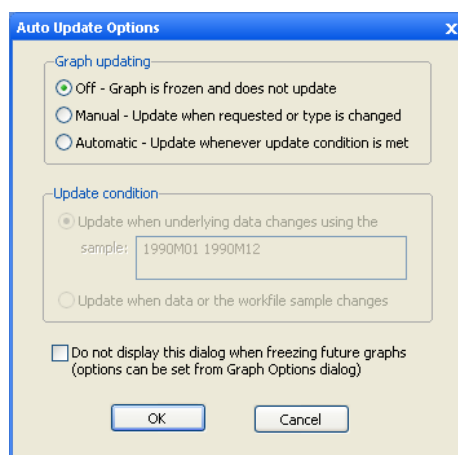
EViews 7 offers improvements to working with graphs along a number of dimensions:

- Graphs may be defined to auto-update
- Interactive observation and value display
- Improved control over formatting of dates in the observation scale
- Added control over date label positioning and two row labelling
- Enhanced control over date/observation axis grid line placement
- More flexible custom labelling for the observation scale
- Updated graph options interface

Auto-Updating Graphs

The most important graphics improvement in EViews 7 is the addition of *auto-updating graphs*. Previously, when you created a graph object by freezing an object view, the data in the graph was fixed to the values at the time of creation. You could use EViews tools for customization, many of which were available only for graph objects, to change the look of the graph, but the underlying data were fixed. If the data subsequently changed, you would have to create a new graph by freezing an updated object view.

Frozen graph objects are now linked to the series or group from which they were created. You may determine if and when a frozen graph should update as the sample or its underlying data change. Thus, you may treat a frozen graph as a snapshot of the data at the time it was frozen as in EViews 6, or allow it to update as data change.



Timberlake Consultants Limited
Consultancy • Training • Software

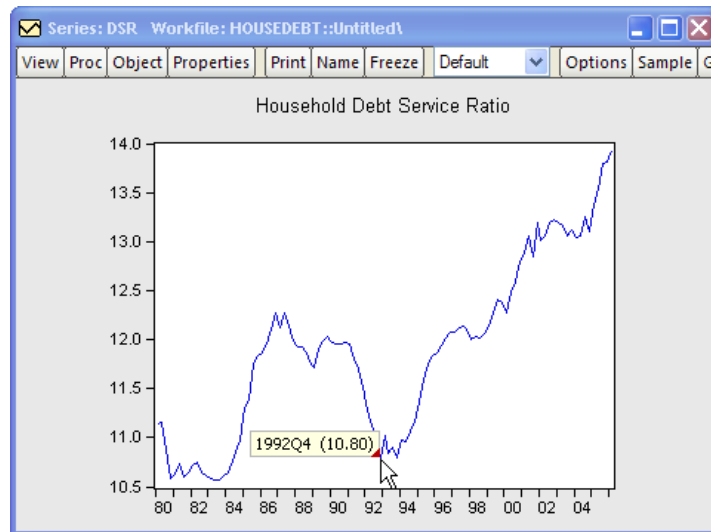
Head Office (UK), B3, Broomsleigh Business Park, Worsley Bridge Road, London SE26 5BN • UK
tel:+44 (0)20 8697 3377 fax:+44 (0)20 8697 3388 email:info@timberlake.co.uk www.timberlake.co.uk

Other Offices and Agencies in: London, Lisbon, Seville, New York, Sao Paulo, Tokyo, Warsaw

[Back to New Features Index](#)

Observation Info Display

You may now interactively display observation identifiers and values in graph views and graph objects. Simply hover your cursor over the data point which you wish to identify. EViews will popup a box in the graph showing the observation label and value.



Alternately, if you hover over any point inside the graph frame, EViews will display the location of that point in the status line located in the lower left-hand corner of your EViews window.

[Back to New Features Index](#)

Date Label Formatting

EViews 7 offers improved control over the formatting of your date labels. In particular, the EViews automatic date formatting setting now allows you to specify a set of guidelines for displaying dates that will be used by EViews when forming labels.

Select **Graph Options** dialog and then choose **Axes & Scaling** and **Obs/Date axis** from the tree menu to display the appropriate **Date format** settings. In



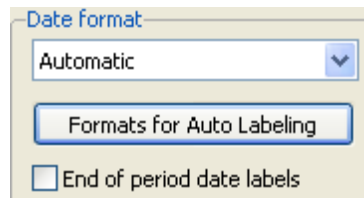
Timberlake Consultants Limited
Consultancy • Training • Software

Head Office (UK), B3, Broomsleigh Business Park, Worsley Bridge Road, London SE26 5BN • UK
tel:+44 (0)20 8697 3377 fax:+44 (0)20 8697 3388 email:info@timberlake.co.uk www.timberlake.co.uk

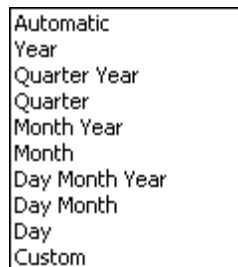
Other Offices and Agencies in: London, Lisbon, Seville, New York, Sao Paulo, Tokyo, Warsaw

workfiles with a date structure, you may use the **Date format** section of the dialog to specify the format of the observation text labels. Observation scales without a date structure are always labeled using the **Automatic** setting.

The **Date format** combo box allows you to select the method of forming labels for the date axis change.



You may use the default **Automatic**, in which EViews will choose an appropriate format, you can select from alternatives that display strings made up of various parts of the dates, or you may select **Custom**, which allows you to specify a fully custom date format string. Depending on your choice, you will be prompted for additional formatting information.



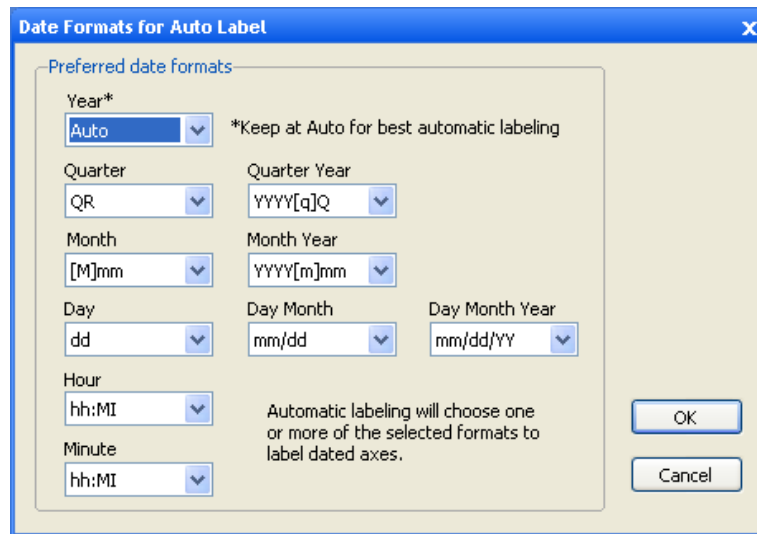
You may also use the **End of period date labels** checkbox to tell EViews to use the end of period date for an observation when constructing its label.



Timberlake Consultants Limited
Consultancy • Training • Software

Head Office (UK), B3, Broomsleigh Business Park, Worsley Bridge Road, London SE26 5BN • UK
tel:+44 (0)20 8697 3377 fax:+44 (0)20 8697 3388 email:info@timberlake.co.uk www.timberlake.co.uk

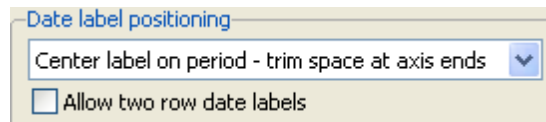
Other Offices and Agencies in: London, Lisbon, Seville, New York, Sao Paulo, Tokyo, Warsaw



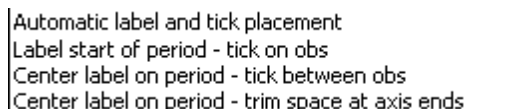
[Back to New Features Index](#)

Date Label Positioning

EViews 7 provides improved control over the positioning of your date labels. Select **Graph Options** dialog and then choose **Axes & Scaling** and **Obs/Date axis** from the tree menu to display the appropriate **Date label positioning** settings.



The **Date label positioning** group determines whether the labels are centered over period intervals, or whether they are placed at the beginning of the interval. You may change the setting in the combo box from the default **Automatic label and tick placement** to label the start or centre of the period.



[Back to New Features Index](#)



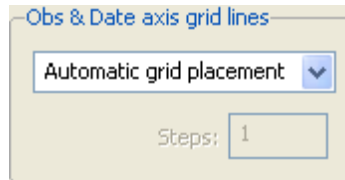
Timberlake Consultants Limited
Consultancy • Training • Software

Head Office (UK), B3, Broomsleigh Business Park, Worsley Bridge Road, London SE26 5BN • UK
tel:+44 (0)20 8697 3377 fax:+44 (0)20 8697 3388 email:info@timberlake.co.uk www.timberlake.co.uk

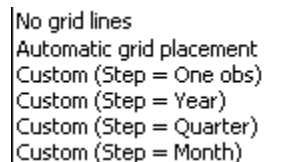
Other Offices and Agencies in: London, Lisbon, Seville, New York, Sao Paulo, Tokyo, Warsaw

Date Axis Grid Lines

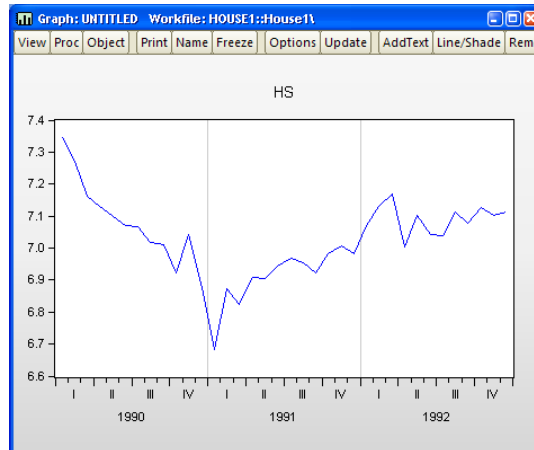
You may now control the placement of grid lines on the date axis (observation scale) of a graph. Select **Graph Options** dialog and then choose **Axes & Scaling** and **Grid lines** to display the **Obs & Date axis grid lines** settings.



Previously EViews either displayed no grid lines or lines drawn on an automatically determined grid. The **Obs & Date axis grid lines** combo allows you to choose the frequency with the lines should be drawn. The first choice in the combo, **No grid lines**, is self explanatory. The second option, **Automatic grid placement**, allows EViews to place grid lines at intervals it deems appropriate for the given frequency and range of your data.



The remaining **Custom** options in the combo box allow you to add grid lines at specified intervals, based on the frequency of your workfile.



[Back to New Features Index](#)



Timberlake Consultants Limited
Consultancy • Training • Software

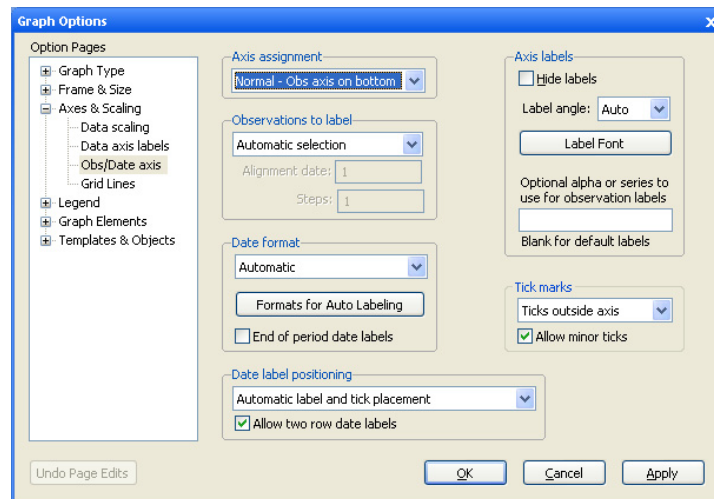
Head Office (UK), B3, Broomsleigh Business Park, Worsley Bridge Road, London SE26 5BN • UK
tel:+44 (0)20 8697 3377 fax:+44 (0)20 8697 3388 email:info@timberlake.co.uk www.timberlake.co.uk

Other Offices and Agencies in: London, Lisbon, Seville, New York, Sao Paulo, Tokyo, Warsaw

Custom Observation Labels

EViews 7 now allows you to instruct EViews to use an alpha or series object to define labels for each observation, with the labels are updated as the underlying values change.

EViews 7 offers one of two methods for adding custom labels to the date axis, depending on the type or status of the graph and the workfile structure.



In the **Obs/Date axis dialog**, you will see *either* a button or an edit field at the bottom of the **Axis labels** group. For graphs that are actively updated, such as a graph view or a frozen graph with updating turned on, an edit field will be displayed. Entering an Alpha or Series name in the field instructs EViews to label each observation with the text or value of the alpha or series.

[Back to New Features Index](#)

Graph Options Dialog

In addition, we have completely redesigned the main **Graph Options** dialog in EViews 7. You will find that most of the options are functionally the same, but they have been broken into smaller categories. Instead of tabs along the top of the dialog, we utilize a descriptive tree structure that runs along the left side of the dialog.

The main **Graph Options** dialog controls the basic display characteristics of your graph.



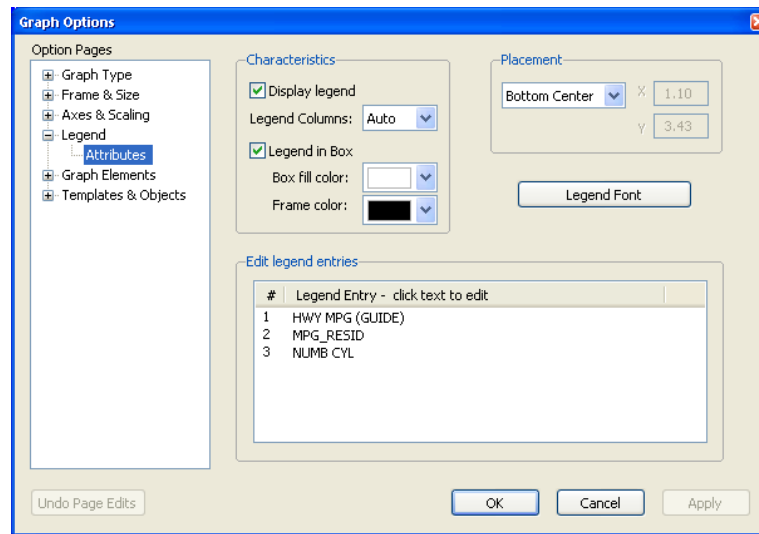
Timberlake Consultants Limited
Consultancy • Training • Software

Head Office (UK), B3, Broomsleigh Business Park, Worsley Bridge Road, London SE26 5BN • UK
tel: +44 (0)20 8697 3377 fax: +44 (0)20 8697 3388 email: info@timberlake.co.uk www.timberlake.co.uk

Other Offices and Agencies in: London, Lisbon, Seville, New York, Sao Paulo, Tokyo, Warsaw

TIMBERLAKE

Statistics • Econometrics • Forecasting



[Back to New Features Index](#)



Timberlake Consultants Limited
Consultancy • Training • Software

Head Office (UK), B3, Broomsleigh Business Park, Worsley Bridge Road, London SE26 5BN • UK
tel: +44 (0)20 8697 3377 fax: +44 (0)20 8697 3388 email: info@timberlake.co.uk www.timberlake.co.uk

Other Offices and Agencies in: London, Lisbon, Seville, New York, Sao Paulo, Tokyo, Warsaw