

## General EViews Interface

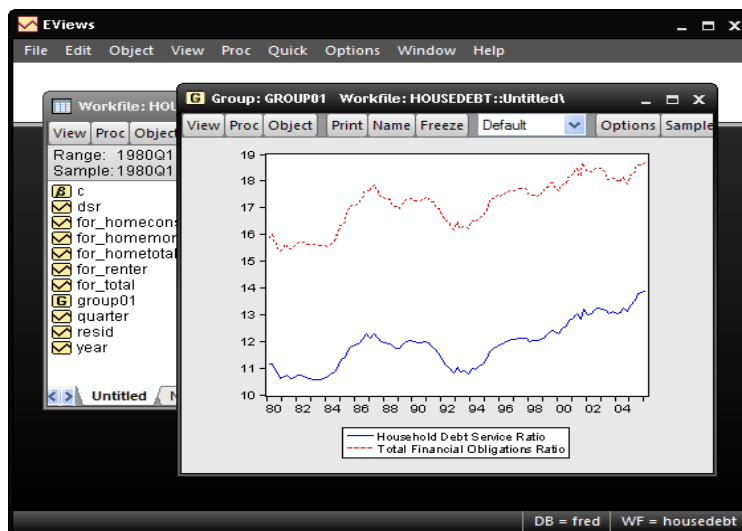
The general EViews interface has been improved in a number of ways. The following is a brief list of the highlights, followed by more detailed discussion:

- [Customize the appearance of your EViews environment](#)
- [Enhanced drag-and-drop support](#)
- [Improved command window interface](#)
- [Improved graph options interface](#)
- [Updated global options interface](#)
- [Auto-update EViews from the web](#)

## Customizable Appearance

You may customize the appearance of your EViews environment to use different colors for windows, backgrounds, toolbars, and status bars.

To access the appearance settings, select **General Options...** in the main EViews menu to display the **Global Options** dialog. Under the first group in the tree, **Windows**, you will find an **Appearance** dialog which allows you to set EViews themes based on various color palettes.



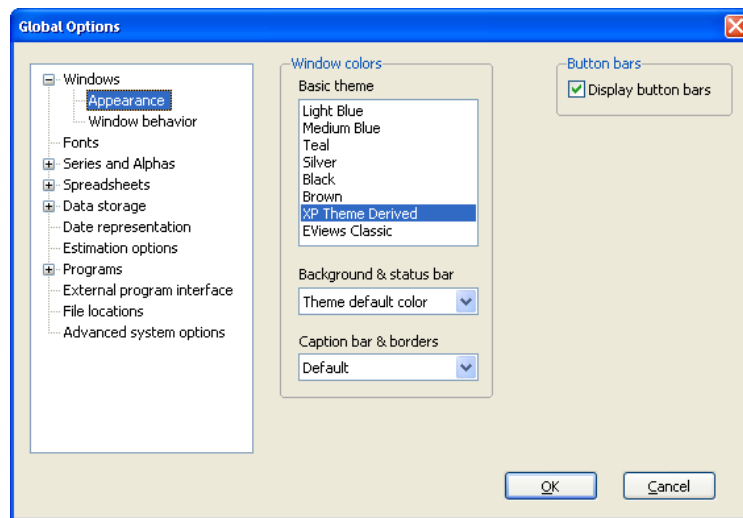
In the **Window colors** groupbox, you may select from a variety of basic themes, including **Light Blue**, **Silver**, and **EViews Classic**. You can let the background and status bar follow this color theme, or choose a different color from the **Background & status bar** dropdown.



**Timberlake Consultants Limited**  
Consultancy • Training • Software

Head Office (UK), B3, Broomsleigh Business Park, Worsley Bridge Road, London SE26 5BN • UK  
tel: +44 (0)20 8697 3377 fax: +44 (0)20 8697 3388 email: info@timberlake.co.uk www.timberlake.co.uk

Other Offices and Agencies in: London, Lisbon, Seville, New York, Sao Paulo, Tokyo, Warsaw



Not surprisingly, the **Caption bar & borders** combo may be used to choose the visual style of your caption bar and borders. The **Default** setting is for EViews to draw the caption bars and borders using colors to match the current theme in a style to match your operating system (either Windows XP or Windows Vista/Windows 7). You may instead choose **EViews rounded** or **Vista style** to have EViews choose a style independent of your operating system.

If you have modified your operating system settings for window borders and text, and wish to have the operating system draw the caption and borders you should select **Operating system drawn**. Most windows in EViews have a row of buttons along the top, called the button bar. To hide these buttons on all windows, uncheck **Display button bars** on the top right of the dialog.

[Back to New Features Index](#)

## Drag-and-Drop

Drag-and-drop support has been enhanced in EViews 7. You can now copy objects between workfiles and pages using drag and drop. You can also use drag-and-drop to copy entire workfile pages and to retrieve objects from an EViews database. You can even use drag-and-drop to add a series to a group or equations to a model object.

For example, you may:



**Timberlake Consultants Limited**  
Consultancy • Training • Software

Head Office (UK), B3, Broomsleigh Business Park, Worsley Bridge Road, London SE26 5BN • UK  
tel:+44 (0)20 8697 3377 fax:+44 (0)20 8697 3388 email:info@timberlake.co.uk www.timberlake.co.uk

Other Offices and Agencies in: London, Lisbon, Seville, New York, Sao Paulo, Tokyo, Warsaw

# TIMBERLAKE

Statistics • Econometrics • Forecasting

- Create a new workfile page and copy the contents of an existing workfile page or foreign source file by dragging the source file or tab and dropping it over the **New Page** tab of the same or another workfile. A plus (“+”) sign will appear when your cursor is over an appropriate area. Alternately, drag the tab into the open area in the EViews window; a new workfile will be created, and the contents of the source page will be copied into the first page of the new workfile.



- Reorder workfile pages within a workfile by dragging a page tab and dropping it over the tab of the page you would like it to follow.
- Combine the contents of two pages by dragging the source page tab onto the destination page window. Depending on the objects being copied and the frequencies of the workfiles, you may receive a series of prompts to assist in completing the paste properly.
- To copy a set of EViews objects from within a page, simply select them and drag them where you'd like them to go. The destination object, whether it is a workfile, group, program, model, or the command window, will attempt to accept the paste of the objects. A plus (“+”) sign will appear when your cursor is over an appropriate area.

In the following page, we see a drag-and-drop operation that copies a set of series into a new workfile page.



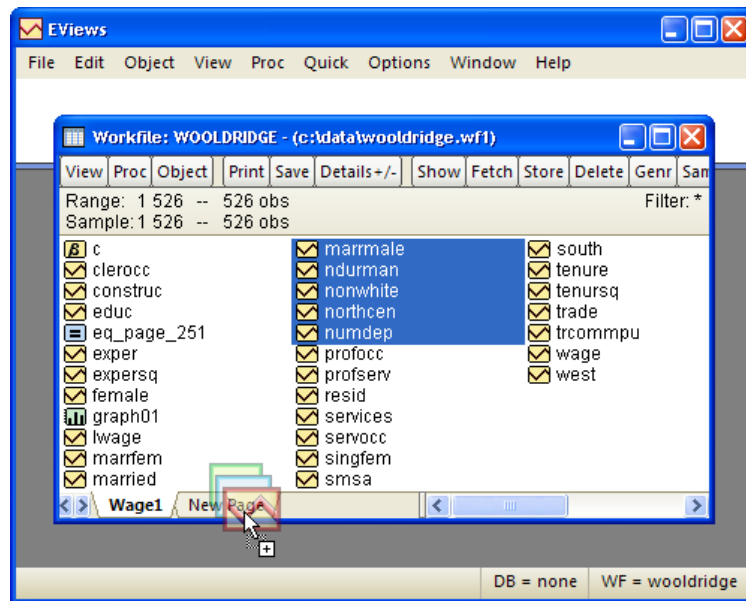
**Timberlake Consultants Limited**  
Consultancy • Training • Software

Head Office (UK), B3, Broomsleigh Business Park, Worsley Bridge Road, London SE26 5BN • UK  
tel: +44 (0)20 8697 3377 fax: +44 (0)20 8697 3388 email: [info@timberlake.co.uk](mailto:info@timberlake.co.uk) [www.timberlake.co.uk](http://www.timberlake.co.uk)

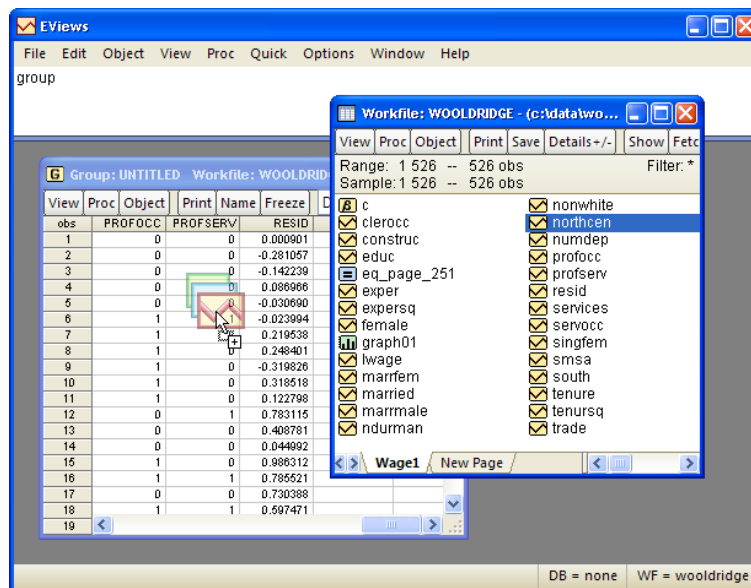
Other Offices and Agencies in: London, Lisbon, Seville, New York, Sao Paulo, Tokyo, Warsaw

# TIMBERLAKE

Statistics • Econometrics • Forecasting



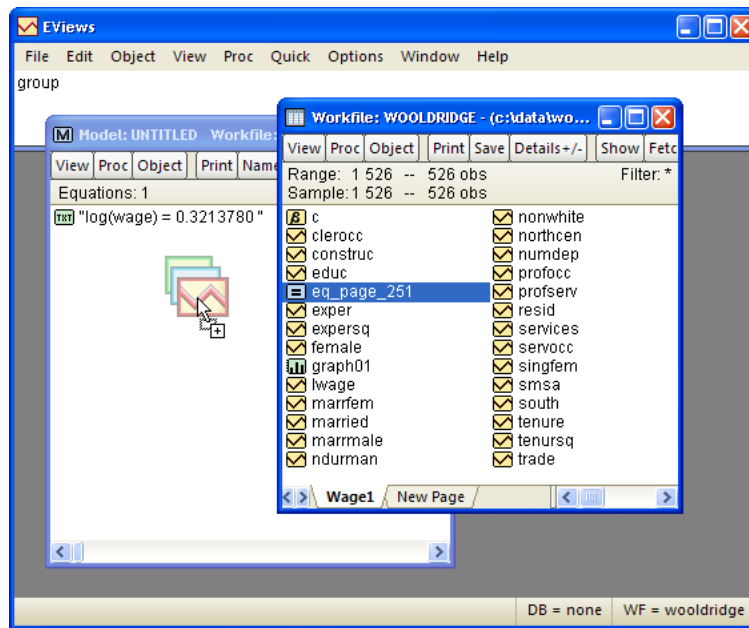
- There are a variety of ways in which EViews objects may be dropped onto other objects.



**Timberlake Consultants Limited**  
 Consultancy • Training • Software

Head Office (UK), B3, Broomsleigh Business Park, Worsley Bridge Road, London SE26 5BN • UK  
 tel:+44 (0)20 8697 3377 fax:+44 (0)20 8697 3388 email:info@timberlake.co.uk www.timberlake.co.uk

Other Offices and Agencies in: London, Lisbon, Seville, New York, Sao Paulo, Tokyo, Warsaw



It is best to experiment with drag-and-drop to discover all of the options now available in EViews 7. As you drag and hold your mouse over a target object, you should see a plus ("+") sign for a paste operation that is anticipated to succeed, and a circle with a line through it for those that are not allowed.

[Back to New Features Index](#)

## Command Window

The EViews command window has been improved to:

- provide improved access to previously executed commands for quick editing and/or re-execution
- allow for undocking, resizing, and dragging to anywhere inside the EViews frame.

### **Improved Command Editing**

When you enter a command, EViews will add it to the list of previously executed commands contained in the window. You can scroll up to an earlier command, edit it, and hit ENTER.

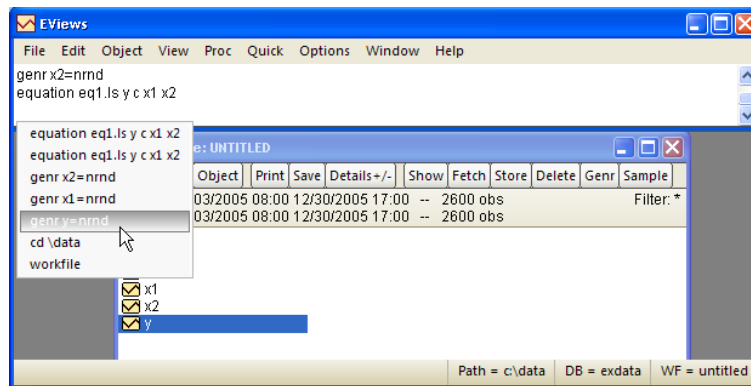


**Timberlake Consultants Limited**  
Consultancy • Training • Software

Head Office (UK), B3, Broomsleigh Business Park, Worsley Bridge Road, London SE26 5BN • UK  
tel:+44 (0)20 8697 3377 fax:+44 (0)20 8697 3388 email:info@timberlake.co.uk www.timberlake.co.uk

Other Offices and Agencies in: London, Lisbon, Seville, New York, Sao Paulo, Tokyo, Warsaw

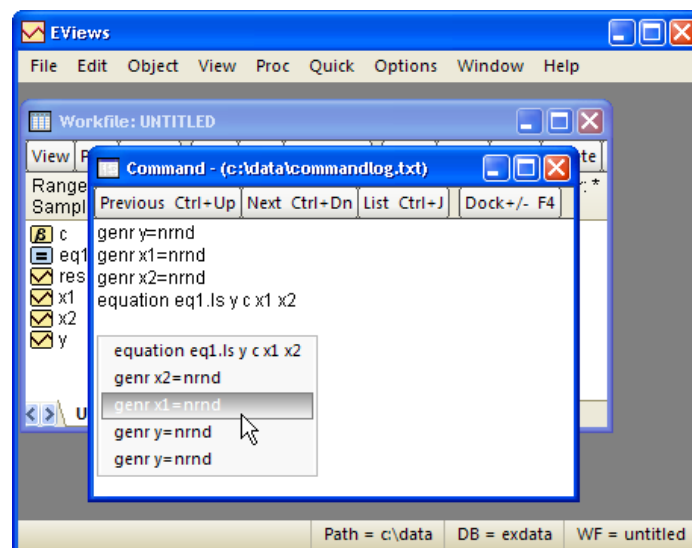
The modified command will be executed. You may also use standard Windows copy and-paste between the command window and any other window.



To look at a history of commands, press the Control Key and the J key (CTRL+J). This key combination displays a history window containing the last 30 commands executed. Use the UP and DOWN arrows until the desired command is selected and then press the ENTER key to add it to the command window, or simply double click on the desired command.

### ***Undocking the Command Window***

You may drag the command window to anywhere inside the EViews frame. Press F4 to toggle docking, or click on the command window, depress the right-mouse button and select **Toggle Command Docking**.



### **Timberlake Consultants Limited** Consultancy • Training • Software

Head Office (UK), B3, Broomsleigh Business Park, Worsley Bridge Road, London SE26 5BN • UK  
tel:+44 (0)20 8697 3377 fax:+44 (0)20 8697 3388 email:info@timberlake.co.uk www.timberlake.co.uk

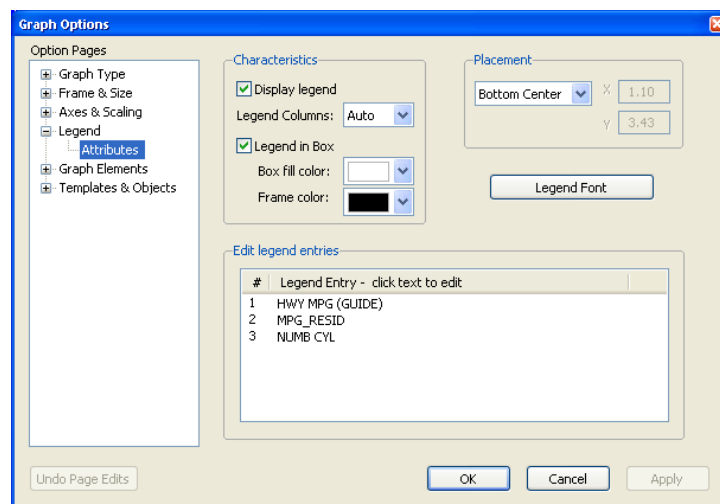
Other Offices and Agencies in: London, Lisbon, Seville, New York, Sao Paulo, Tokyo, Warsaw

When undocked, the command window toolbar contains buttons for displaying commands in the list, and for redocking.

[Back to New Features Index](#)

## Graph Dialog Interface

Both the local and global graph options dialogs have been completely redesigned in EViews 7.



[Back to New Features Index](#)

## Global Options Interface

The various global options dialogs from EViews 6 have been consolidated into a single **General Options** dialog, featuring an easy-to-use tree structure so you may quickly navigate between settings.

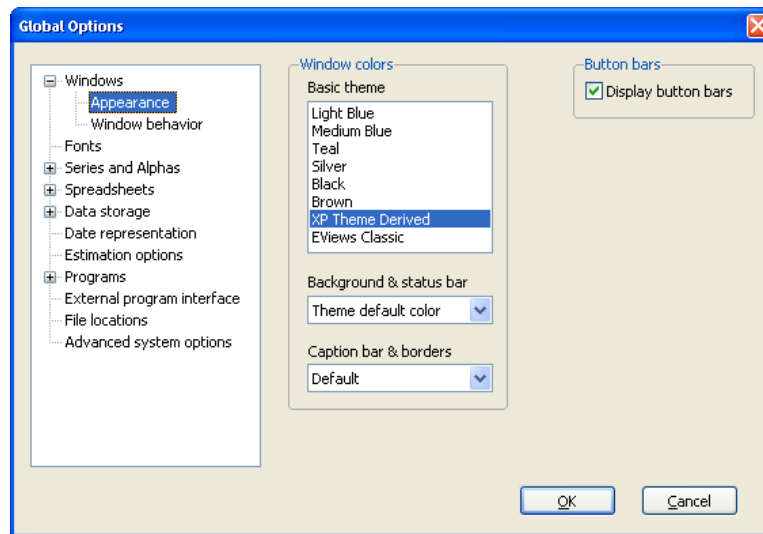
To display the dialog, select **Options/General Options...** from the main EViews 7 menu.



**Timberlake Consultants Limited**  
Consultancy • Training • Software

Head Office (UK), B3, Broomsleigh Business Park, Worsley Bridge Road, London SE26 5BN • UK  
tel: +44 (0)20 8697 3377 fax: +44 (0)20 8697 3388 email: info@timberlake.co.uk www.timberlake.co.uk

Other Offices and Agencies in: London, Lisbon, Seville, New York, Sao Paulo, Tokyo, Warsaw



The options have been divided into broad categories. There are sub-categories listed under entries marked with a "+" that may be displayed. As you click on the categories on the left hand side, the dialog will change to show you the appropriate options.

In addition to reorganizing the existing settings, there are a few important new features that may be found in this dialog:

- Under the first group, **Windows**, you will find an **Appearance** dialog that you may use to set EViews themes based on various color palettes.
- In **Advanced system options**, a new field offers control over multi-processor use. You may elect to use up to eight threads in statistical calculations.
- **Runtime settings**, under the **Programs** group, offers global defaults for the new program log messages). From here, you may control which messages are output to the log window: program lines, status line messages, user log messages, or program errors.
- External program intrerface provides settings for controlling the case of variables created in MATLAB or R using xput.

[Back to New Features Index](#)



**Timberlake Consultants Limited**  
Consultancy • Training • Software

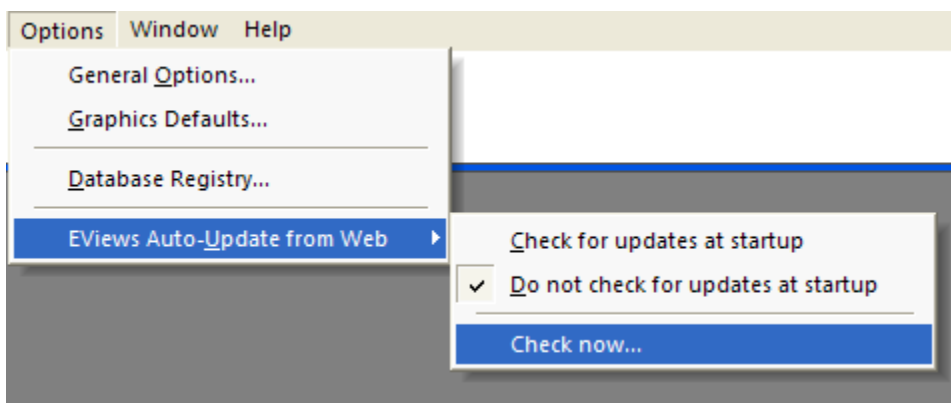
Head Office (UK), B3, Broomsleigh Business Park, Worsley Bridge Road, London SE26 5BN • UK  
tel: +44 (0)20 8697 3377 fax: +44 (0)20 8697 3388 email: [info@timberlake.co.uk](mailto:info@timberlake.co.uk) [www.timberlake.co.uk](http://www.timberlake.co.uk)

Other Offices and Agencies in: London, Lisbon, Seville, New York, Sao Paulo, Tokyo, Warsaw

## EViews Auto-Update from Web

QMS occasionally releases patches to the EViews program, and we strongly recommend that you keep your copy of EViews as up-to-date as possible.

EViews 7 includes an automatic updating feature that can check for new updates every day, and install any update that may be available. The automatic update feature can be disabled from the **EViews Auto-Update from Web** menu item. You can also manually check for updates from within EViews at any time by selecting **Check now...** under the **EViews Auto-Update from Web** menu item, or by selecting **EViews Update** from the **Help** menu.



You may also check for updates to the EViews program or for updates to supplementary components such as the EViews documentation or sample data and programs, by visiting the Download section of the EViews website.

[Back to New Features Index](#)



**Timberlake Consultants Limited**  
Consultancy • Training • Software

Head Office (UK), B3, Broomsleigh Business Park, Worsley Bridge Road, London SE26 5BN • UK  
tel:+44 (0)20 8697 3377 fax:+44 (0)20 8697 3388 email:info@timberlake.co.uk www.timberlake.co.uk

Other Offices and Agencies in: London, Lisbon, Seville, New York, Sao Paulo, Tokyo, Warsaw